

**CRAFT Beer & Brewing Magazine**  
**BREWING INDUSTRY GUIDE** // **WINTER 2021**

CASE STUDY

# FONTA FLORA

From small-town nano to pastoral farm brewery to urban taproom, learn from this North Carolina brewer's curious and challenging path.



**HOPS INSIDER:**  
FRONT LINE FROM  
HARVEST; THE TRUTH  
ABOUT SMOKE TAIN;  
PICK-TIMING AND  
CLIMATE CHANGE

**IN A JAM: MANAGING  
FRUIT SHORTAGES**

**STRENGTH IN NUMBERS**  
CRAFTING BETTER  
ACQUISITIONS

**BARLEY VARIETIES:**  
HOW MUCH DO THEY  
IMPACT FLAVOR?

**HARNESSING THE POWER  
OF DIASTATIC YEAST**



# NEW AND NOTABLE

Fresh and innovative products from the best manufacturers in the business



## SMOOTHER ROASTED MALTS FROM BESTMALZ

New to North America exclusively through Country Malt Group are German BESTMALZ Roasted Malts. These malts are roasted in a more gentle, fluidized bed process to create smooth debittered flavors when compared to traditional drum-roasted malts. They are perfect for intensifying the color in schwarzbiers, bocks, alts, brown ales, porters, and stouts. Reach out to us to get your hands on BEST Chocolate, Black, and Black Malt eXtra today!

[bit.ly/BESTroasted](http://bit.ly/BESTroasted)



## ORGANIC GRAPEFRUIT PEEL FROM MOUNTAIN ROSE HERBS

Mountain Rose Herbs' organic grapefruit peel adds a refreshing, tart citrus zing to fermented creations. Set your brew apart from the rest with a complex flavor that is sour, bitter, and slightly sweet all at once. Herbs and spices simply make beer better.

[mountainroseherbs.com](http://mountainroseherbs.com)



## PACIFIC SUNRISE™ FROM HOP REVOLUTION

Inject unique flavor combinations into NEIPA and IPA styles with this lemon and clementine marmalade-driven New Zealand variety. Tropical hits of cantaloupe, melon, and mango, alongside stone fruit, sweet floral notes, and hints of pine round out the hop profile. Contact Hop Revolution, the only grower of Pacific Sunrise™ on commercial scale.

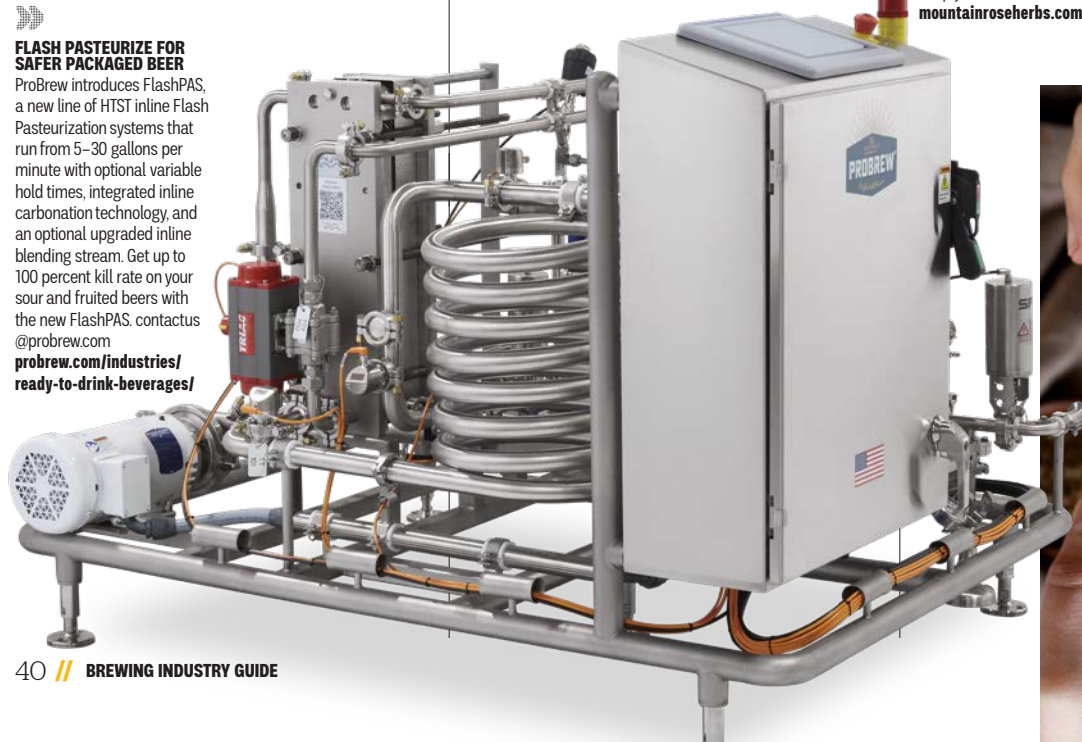
[bit.ly/3ww8DaC](http://bit.ly/3ww8DaC)



## FLASH PASTEURIZE FOR SAFER PACKAGED BEER

ProBrew introduces FlashPAS, a new line of HTST inline Flash Pasteurization systems that run from 5–30 gallons per minute with optional variable hold times, integrated inline carbonation technology, and an optional upgraded inline blending stream. Get up to 100 percent kill rate on your sour and fruited beers with the new FlashPAS. contactus@probrew.com

[probrew.com/industries/ready-to-drink-beverages/](http://probrew.com/industries/ready-to-drink-beverages/)







#### FLAVOR-FORWARD EXTRACTS

Two Trees extracts provide more than time-honored and on-trend barrel-aged taste. They provide sustainability, creativity, agility, and consistency for craft beers to deliver unmatched speed-to-market innovation. Seek ultra-premium expansion and barrel-aged taste for your beers, including IPAs, with Two Trees. Contact Chad Slagle at 818.613.3826. [twotreesdistilling.com/sustainably-matured-wine-and-beer](http://twotreesdistilling.com/sustainably-matured-wine-and-beer)



#### ABE'S NEW COUNTER PRESSURE CANNING LINE SERIES

ABE Beverage Equipment has expanded its counter-pressure canning lineup. Introducing the CraftCan Iso8, an 8CPM single-operator canner that is compact and adjustable for various can sizes. The Iso Series offers isobaric filling for varying CO<sub>2</sub> levels, up to 4.0 vol, at 8, 16, and 40CPM. Nitro option available.

[ABEbeverageequipment.com/product/canning-lines](http://ABEbeverageequipment.com/product/canning-lines)



#### REAP THE REWARDS FROM FIVE STAR CHEMICALS

Are you involved in a homebrew club or an avid homebrewer? Want to receive even more benefits? Hop to it. Join Five Star Chemical's new Homebrew Club Program and start reaping the rewards.

- Exclusive discounts
- In-person or remote training
- New product testing
- Competition sponsorships
- Monthly educational presentations

Join now!  
[fivestarchemicals.com](http://fivestarchemicals.com)



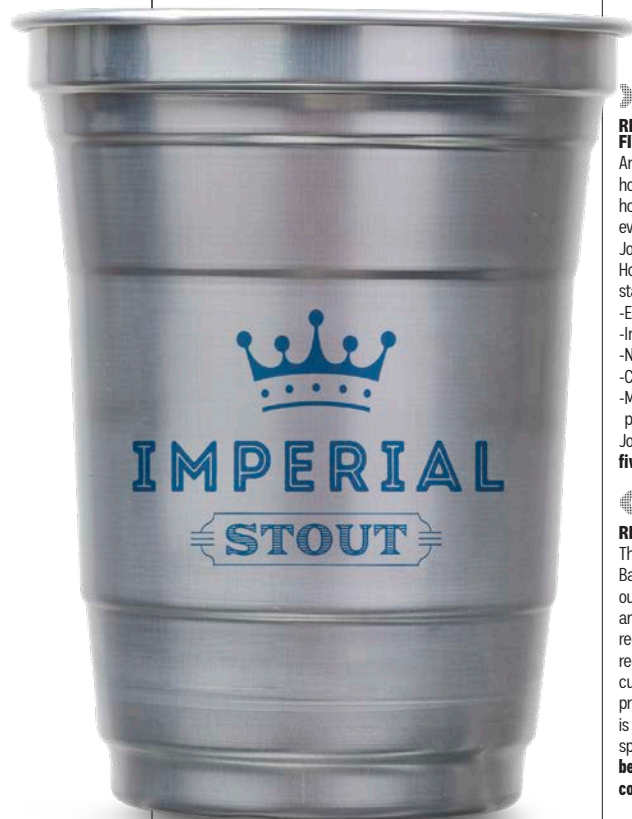
#### REFILL AND RECYCLE

The new refill-and-recycle Ball Aluminum Cup™ brings out the best in cold drinks and makes the most of recycling efforts. Infinitely recyclable and available for customization with full-color printing domestically, this cup is perfect for key accounts, sporting events, and more. [beercup.com/aluminum-cold-beverage-cup](http://beercup.com/aluminum-cold-beverage-cup)



#### FROM BSG—T-45 FOR A BIGGER FLAVOR PUNCH!

A versatile brewing ingredient that packs a big flavor punch! Concentrated lupulin-enriched hop pellets for greater efficiency, sustainability, and beer yield. Contains only 45 percent of the original cone weight for concentrated flavor and greater revenue per barrel. Limited quantities. Order yours now!  
[go.bsgcraft.com/T-45.html](http://go.bsgcraft.com/T-45.html)







**SHRINK-SLEEVED CANS**  
Order custom decorated cans for delivery in as few as 4–5 weeks (dependent on art approval and transit time). Available in multiple cans sizes and fill volumes including 12oz, 16oz, and 12oz sleek. Unlimited color options and multiple varnish types. Minimum order quantity of one half-pallet per label. Competitive pricing with volume discounts. Request a quote via [hello@americancanning.com](mailto:hello@americancanning.com). [americancanning.com/collections/shrink-sleeve-cans](http://americancanning.com/collections/shrink-sleeve-cans)

**FLAVORFUL DRIED LEMONGRASS**  
Part of Burma Spice's FARM TO TABLE line, our lemongrass is the aromatic stalks only. Fresh lemongrass is washed, cut, and air-dried in small batches in our facility immediately after harvest to ensure peak freshness. They go from farm to table with maximum aroma in days not months like others on the market. [burmaspice.com/product/lemon-grass-slices-dried](http://burmaspice.com/product/lemon-grass-slices-dried)

**MORE FLAVOR WITH NO VEGETATIVE MATTER**  
Salvo™ delivers impactful variety-specific flavor and aroma with no sensorial bitterness. Salvo™ is best used as a late-kettle or whirlpool addition to partially replace leaf or pellet hops. And since Salvo™ contains no vegetative matter, it can add cash to your wallet by improving beer yield. [hopsteiner.com/salvo](http://hopsteiner.com/salvo)



**KOMBUCHA BREWHOUSE**  
YoLong Kombucha equipment moves kombucha brewing from home to commercial. YoLong tea-brewing skid has integrated the process of tea infusion (accepts bulk tea, tea bag, and tea fannings), thermostat control, sugar pre-dissolve and homogeneity, vorlauf, filtration, cooling to the suitable temperature for scoby, and CIP itself. [yolongbrewtech.com/kombucha-brewery-equipment](http://yolongbrewtech.com/kombucha-brewery-equipment)

**WOMEN'S SALMON SISTERS LEGACY CLOG**  
The slip-on version of an Alaskan staple in the commercial and sport-fishing industry, these clogs will give you the flexible, all-day comfort that you love about our Classic Legacy Boot with increased versatility for you to step-in and get to work. Proven on the Bering Sea and trusted by commercial fishermen, XTRATUF's reputation for slip resistance, comfort, and durability is unmatched in the marketplace. Whether at the start of the brewing process or sanitizing at the end, there is potential for water everywhere, and you want to be focused on your work not your feet. XTRATUF materials are built to last, whether freezing saltwater, boiling wort, cleaning with bleach, or anything in between. [xtratuf.com/xt-w-legacy-clog/LLW9PF.html](http://xtratuf.com/xt-w-legacy-clog/LLW9PF.html)







**BOXPOP MARKETING  
TRAILERS**

Build a buzz that travels. Serve customers on a city street or inside a festival or event. BoxPop Marketing Trailers hook up to any standard SUV or pickup truck. Custom-built inside and out. Two sets of stairs included. Fully secure.  
[britteninc.com/start/put-your-brand-on-wheels](http://britteninc.com/start/put-your-brand-on-wheels)

**CRYO POP™ ORIGINAL BLEND**

With one of the only labs capable of analyzing previously undetectable aromatic components, YCH created a Cryo Hops® blend packed with beer-soluble hop compounds. Formerly known as trial blend TRI2304CR, Cryo Pop™ Original Blend translates raw hop aroma into finished beers, delivering massive tropical, stone fruit, and citrus aromas.  
[Cryopopblend.com](http://Cryopopblend.com)

**CRYO  
POP™**

**ORIGINAL BLEND**



**GLADIATOR KEG WASHER**

The Gladiator Keg Washer from Brewmation cleans, sanitizes, purges, and pressurizes up to 40 kegs/hour! With standard UL/ cUL controls, dual-speed flow, compact footprint, and a customizable 24-step cleaning process, the Gladiator is now available with an optional CIP Upgrade Module! Visit us online for a full list of features! [Brewmation.com/gladiator](http://Brewmation.com/gladiator)

**PAKTECH NOW OFFERS  
APPLICATOR FINANCING**

PakTech has partnered with GreatAmerica to offer no-money-down financing options on all applicators. As with our handles, we want adding an applicator to your facility to be smart, sustainable, and simple. Request a quote today!  
[paktech-opi.com/financing](http://paktech-opi.com/financing)

**QUALITY RASPBERRY  
CRAFT CONCENTRATE**

Raspberry is Old Orchard's top-selling craft concentrate flavor—with good reason. Elevates an ale, sour, stout, and more. Try this year-round flavor for year-round results. See what's brewing at [oldorchard.com/brewer](http://oldorchard.com/brewer)

